

**Client : The Bergquist Company**  
**301 Washington St., Cannon Falls,**  
**Minnesota, 55009 U.S.A.**

The following sample(s) was/were submitted and identified by/on behalf of the client as:

Sample Description : Gap Pad (R) 3000S30  
Sample No. : 1662619  
Sample Condition : As per attached photograph  
Sample Receiving Date : 23-Apr-2009  
Testing Period : 23-Apr-2009 to 27-Apr-2009  
Test Requested : In accordance with the RoHS Directive 2002/95/EC and its amendment directives  
Test Method : (1) With reference to IEC 62321:2008 for Lead content, Analysis was performed by ICP-OES.  
(2) With reference to IEC 62321:2008 for Cadmium content, Analysis was performed by ICP-OES.  
(3) With reference to IEC 62321:2008 for Mercury content, Analysis was performed by ICP-OES.  
(4) With reference to IEC 62321:2008 for Hexavalent Chromium by Alkaline Digestion / Colorimetric Method, Analysis was performed by UV-Vis Spectrometry.  
(5) With reference to IEC 62321:2008 for PBB/PBDE content, Analysis was performed by GC/MS.  
Test Results : Please refer to next page.

## CONCLUSION

Based on the performed tests on submitted samples, the result comply with the RoHS Directive 2002/95/EC and its subsequent amendments.

**Signed for and on behalf of**  
**SGS (Thailand) Limited**



**Pornpana Lirathpong**  
**Hardlines Testing Manager**

TEST RESULTS

Test results by chemical method (Unit: mg/kg)

Test Item (s):	Method (Refer to)	Result (1)	MDL	RoHS Limit
Lead (Pb)	(1)	n.d.	2	1000
Cadmium (Cd)	(2)	n.d.	2	100
Mercury (Hg)	(3)	n.d.	2	1000
Hexavalent Chromium (CrVI) by Alkaline Digestion/Colorimetric Method	(4)	n.d.	2	1000
sum of PBBs	(5)	n.d.	-	1000
Monobromobiphenyl		n.d.	5	-
Dibromobiphenyl		n.d.	5	-
Tribromobiphenyl		n.d.	5	-
Tetrabromobiphenyl		n.d.	5	-
Pentabromobiphenyl		n.d.	5	-
Hexabromobiphenyl		n.d.	5	-
Heptabromobiphenyl		n.d.	5	-
Octabromobiphenyl		n.d.	5	-
Nonabromobiphenyl		n.d.	5	-
Decabromobiphenyl		n.d.	5	-

1330050

This Test Report is issued by the Company under its General Conditions of Service printed overleaf and accessible at [http://www.sgs.com/terms\\_and\\_conditions.htm](http://www.sgs.com/terms_and_conditions.htm). Attention is drawn to the limitations of liability, indemnification and jurisdiction issues defined therein.

Any other holder of this document is advised that information contained hereon reflects the Company's findings at the time of its intervention only and within the limits of Client's instructions, if any. The Company's sole responsibility is to its Client and this document does not exonerate parties to a transaction from exercising all their rights and obligations under the transaction documents. Any unauthorized alteration, forgery or falsification of the content or appearance of this report is unlawful and offenders may be prosecuted to the fullest extent of the law.

Unless otherwise stated the results shown in this Test Report refer only to the sample (s) tested and such sample (s) are retained for 30 days only. This Test Report cannot be reproduced, except in full, without prior written permission of the Company.

TEST RESULTS

Test results by chemical method (Unit: mg/kg)

Test Item (s):	Method (Refer to)	Result (1)	MDL	RoHS Limit
Sum of PBDEs	(5)	n.d.	-	1000
Monobromodiphenyl ether		n.d.	5	-
Dibromodiphenyl ether		n.d.	5	-
Tribromodiphenyl ether		n.d.	5	-
Tetrabromodiphenyl ether		n.d.	5	-
Pentabromodiphenyl ether		n.d.	5	-
Hexabromodiphenyl ether		n.d.	5	-
Heptabromodiphenyl ether		n.d.	5	-
Octabromodiphenyl ether		n.d.	5	-
Nonabromodiphenyl ether		n.d.	5	-
Decabromodiphenyl ether		n.d.	5	-

Test Part Description

Result (1) blue gap pad (Gap Pad (R) 3000S30)

Note :

(a) mg/kg = ppm ; 0.1 wt% = 1000 ppm

(b) n.d. = Not Detected

(c) MDL = Method Detection Limit

(d) The exemption of DecaBDE in polymeric application according 2005/17/EC was overruled by the European Court of Justice by its decision of 01.04.2008. Subsequently DecaBDE will be included in the sum of PBDE after 01.07.2008

(e) "-" = Not regulated

1330050

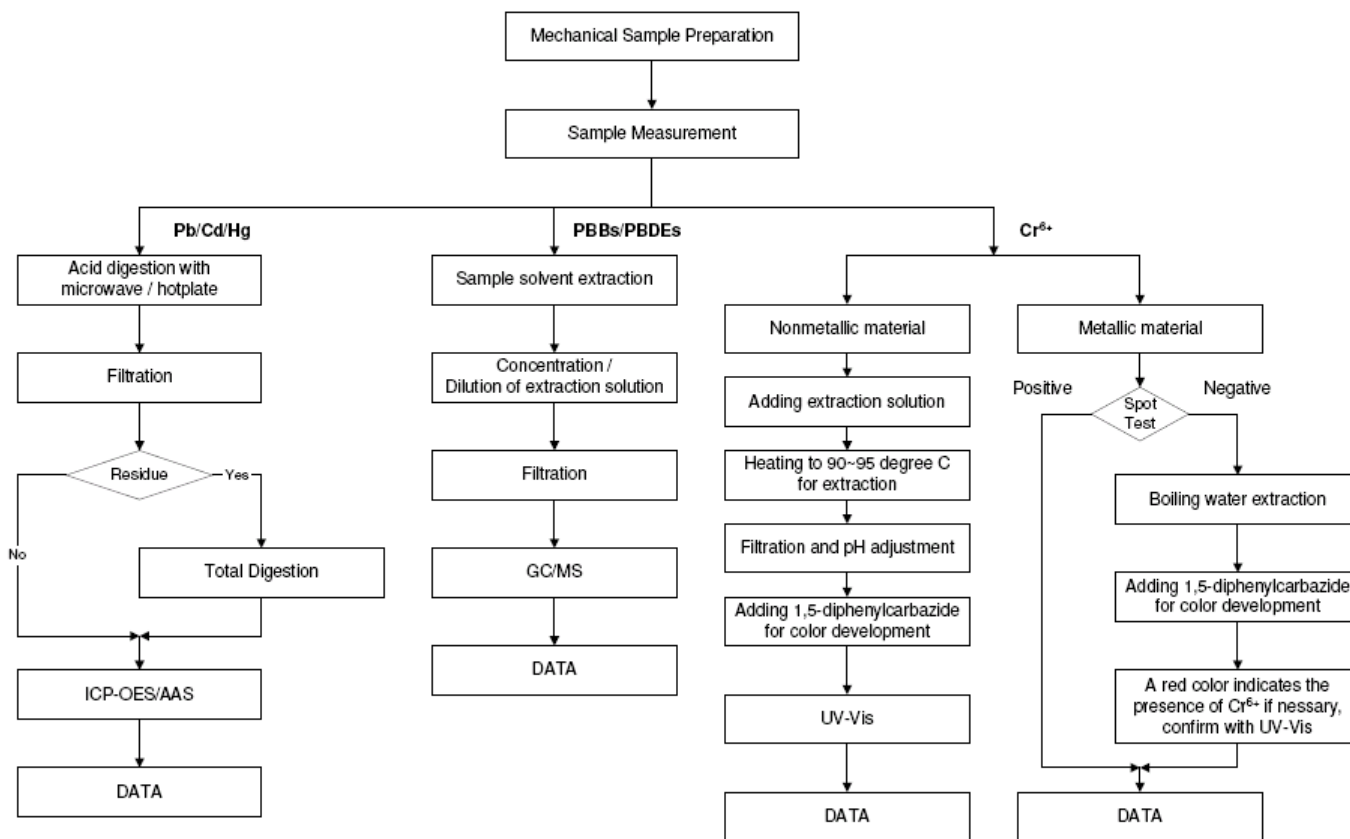
This Test Report is issued by the Company under its General Conditions of Service printed overleaf and accessible at [http://www.sgs.com/terms\\_and\\_conditions.htm](http://www.sgs.com/terms_and_conditions.htm). Attention is drawn to the limitations of liability, indemnification and jurisdiction issues defined therein.

Any other holder of this document is advised that information contained hereon reflects the Company's findings at the time of its intervention only and within the limits of Client's instructions, if any. The Company's sole responsibility is to its Client and this document does not exonerate parties to a transaction from exercising all their rights and obligations under the transaction documents. Any unauthorized alteration, forgery or falsification of the content or appearance of this report is unlawful and offenders may be prosecuted to the fullest extent of the law.

Unless otherwise stated the results shown in this Test Report refer only to the sample (s) tested and such sample (s) are retained for 30 days only. This Test Report cannot be reproduced, except in full, without prior written permission of the Company.

Flow Chart for RoHS : Pb/Cd/Hg/Cr<sup>6+</sup>/PBBs/PBDEs Testing

1. Operator : Wanwisa Seakew
2. Section Chief : Laddawan Uranpitr
3. The sample was dissolved totally by pre-conditioning method according to below flowchart. (Cr<sup>6+</sup> and PBBs/PBDEs test method excluded)



1330050

This Test Report is issued by the Company under its General Conditions of Service printed overleaf and accessible at [http://www.sgs.com/terms\\_and\\_conditions.htm](http://www.sgs.com/terms_and_conditions.htm). Attention is drawn to the limitations of liability, indemnification and jurisdiction issues defined therein.

Any other holder of this document is advised that information contained hereon reflects the Company's findings at the time of its intervention only and within the limits of Client's instructions, if any. The Company's sole responsibility is to its Client and this document does not exonerate parties to a transaction from exercising all their rights and obligations under the transaction documents. Any unauthorized alteration, forgery or falsification of the content or appearance of this report is unlawful and offenders may be prosecuted to the fullest extent of the law.

Unless otherwise stated the results shown in this Test Report refer only to the sample (s) tested and such sample (s) are retained for 30 days only. This Test Report cannot be reproduced, except in full, without prior written permission of the Company.

SAMPLE/ATTACHMENT PICTURE



\*\*\*\*\* End of Report \*\*\*\*\*

1330050

*This Test Report is issued by the Company under its General Conditions of Service printed overleaf and accessible at [http://www.sgs.com/terms\\_and\\_conditions.htm](http://www.sgs.com/terms_and_conditions.htm). Attention is drawn to the limitations of liability, indemnification and jurisdiction issues defined therein.*

*Any other holder of this document is advised that information contained hereon reflects the Company's findings at the time of its intervention only and within the limits of Client's instructions, if any. The Company's sole responsibility is to its Client and this document does not exonerate parties to a transaction from exercising all their rights and obligations under the transaction documents. Any unauthorized alteration, forgery or falsification of the content or appearance of this report is unlawful and offenders may be prosecuted to the fullest extent of the law.*

*Unless otherwise stated the results shown in this Test Report refer only to the sample (s) tested and such sample (s) are retained for 30 days only. This Test Report cannot be reproduced, except in full, without prior written permission of the Company.*