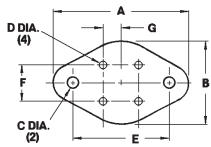
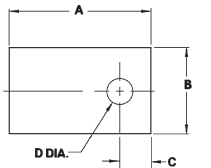


Sil-Pad® Configurations

Metric Measurements

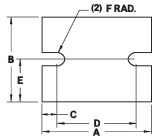


4 Lead TO-66	Part Number Suffix	"A"	"B"	"C"	Dimensions "D"			"E"	"F"	"G"
	-84	33.32	19.35	3.56	1.57	24.38	5.08	2.54		

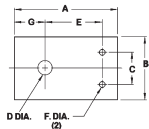


TO-220

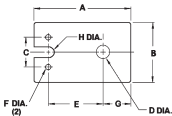
Plastic Power	Part Number Suffix	"A"	"B"	Dimensions "C"		"D"	Part Number Suffix	"A"	"B"	Dimensions "C"		"D"
Various (Clip Mount)	-35	18.03	12.70	4.06	3.58	Various	-104	25.40	19.05	7.62	3.56	
	-43	19.05	12.70			Various	-107	20.57	23.11	4.32	3.73	
	-50	11.10	7.92	3.56	2.36	Various	-110	24.99	19.99			
	-51	17.45	14.27	5.54	3.18	Various	-114	21.01	24.00	5.00	3.81	
	-52	21.72	16.00	5.84	2.36	Various	-116	21.72	16.00	5.79	3.10	
	-54	19.05	12.70	4.75	3.73	Various	-117	21.01	18.01	6.50	3.20	
	TO-202	-55	15.49	14.22	6.22	3.18	Various	-118	19.00	14.00	5.51	3.20
	Various	-56	21.72	14.27	5.54	3.18	Various	-119	11.10	7.90	3.61	2.79
	TO-220	-58	19.05	12.70	4.75	3.18	Various	-120	18.49	11.99	3.99	2.49
	TO-126	-60	11.10	7.92	3.56	3.10	TO-3P	-122	28.96	20.57	9.02	3.73
	Various	-61	19.05	10.41	5.72	3.96	Various	-126	24.00	19.00	6.50	4.11
	TO-220	-62	19.05	15.24	6.10	3.81	Various	-128	24.99	42.01	8.00	3.99
	Various	-63	19.05	15.24	6.10	2.92	Various	-131	18.01	13.00	4.50	3.10
	Various	-64	12.70	9.78	4.32	3.05	Various	-132	11.99	8.00	3.99	3.20
	TO-218	-68	28.58	15.88	5.08	3.68	Various	-133	22.00	18.01	6.50	3.20
	Various	-70	35.81	20.57	9.02	3.73	Various	-134	24.00	18.01	5.79	3.20
	Various	-90	21.84	18.80	5.08	4.06	Various	-136	31.75	25.40		
	Various	-102	22.00	16.51	5.51	3.61	Various	-137	31.75	25.40	6.55	3.23
	Various	-103	19.05	20.32	3.81	4.06	Various	-138	31.75	25.40	6.55	3.76



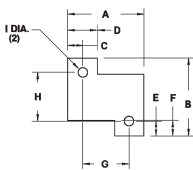
Power Module	Number Suffix	"A"	"B"	Dimensions "C"		"D"	"E"	"F"
	-67	38.10	22.86	3.81	30.48	11.43	1.90	
	-101	63.50	50.80	8.74	46.02	25.40	3.96	



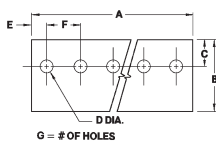
Plastic Power	Part Number Suffix	"A"	"B"	"C"	Dimensions "D"			"E"	"F"	"G"
	-57	23.11	12.70	5.08	3.18	14.73	1.17	6.73		
	-89	24.97	19.05	10.97	3.96	16.89	2.57	5.51		



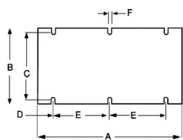
Plastic Power	Part Number Suffix	"A"	"B"	"C"	"D"	"E"	"F"	"G"	"H"
	-66	25.40	12.70	5.08	3.58	15.90	1.17	5.56	0.81



Power Resistor	Part Number Suffix	"A"	"B"	"C"	"D"	Dimensions "E"			"F"	"G"	"H"	"I"
RH-25	-94	30.15	30.61	5.94	11.91	5.38	3.96	18.26	19.84		3.56	
RH-50	-95	53.16	32.13	6.73	13.46	5.33	6.48	39.70	21.46		3.56	
RH-5	-96	18.42	19.58	3.56	7.11	3.56	3.96	11.30	12.47		2.36	
RH-10	-97	20.45	22.61	3.23	6.35	3.30	4.83	14.00	16.00		3.07	
RH-25	-98	29.21	29.97	5.87	10.80	4.83	6.86	17.48	20.32		3.73	
RH-50	-99	49.91	31.39	5.03	10.26	3.35	6.68	39.85	24.69		3.30	



TO-220 Multiples	Part Number Suffix	"A"	"B"	Dimensions "C"		"D"	"E"	"F"	# of Holes
2 Parts	-34	25.40	19.05	4.75	3.18	6.35	12.70	2	
3 Parts	-36	38.10	19.05	4.75	3.18	6.35	12.70	3	
	-37	50.80	19.05	4.75	3.18	6.35	12.70	4	
	-38	63.50	19.05	4.75	3.18	6.35	12.70	5	
	-39	76.20	19.05	4.75	3.18	6.35	12.70	6	
	-40	88.90	19.05	4.75	3.18	6.35	12.70	7	
	-41	101.60	19.05	4.75	3.18	6.35	12.70	8	

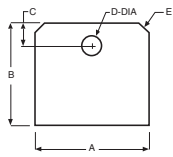


Power Module	Part Number Suffix	"A"	"B"	Dimensions "C"		"D"	"E"	"F"
	-108	116.84	60.96	53.97	12.70	45.72	3.18	
	-140	116.8	61.00	53.30	12.70	45.70	3.80	
	-141	57.90	61.00	53.40	12.40	16.50	3.80	
	-142	57.91	36.83	32.26	12.45	16.50	3.30	

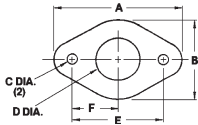
ORDERING

Sil-Pad® Configurations

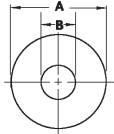
Metric Measurements



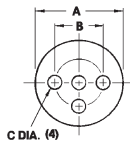
Multiwatt	Part Number Suffix	"A"	"B"	Dimensions "C" "D" "E"		
	-124	22.15	20.07	4.06	3.76	3.0 × 45°
	-125	22.00	19.99	3.99	3.91	2.0 × 45°



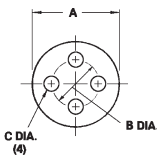
Multi-Lead TO-66	Part Number Suffix	"A"	"B"	Dimensions "C" "D" "E" "F"			
	-93	34.29	20.32	3.56	10.16	24.38	12.19



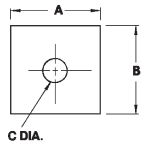
Diode Washer	Part Number Suffix	"A"	"B"	Part Number Suffix	"A"	"B"
Various	-19	12.95	3.56	Various -75	9.14	6.60
DO-4	-20	12.95	5.08	Various -76	19.05	3.18
DO-5	-21	20.32	6.60	Various -77	20.32	4.83
DO-4 (oversized)	-22	15.88	5.08	DO-8 -78	22.23	7.95
DO-5 (oversized)	-25	25.40	6.60	Various -79	29.97	13.08
Various	-26	20.62	3.68	Various -80	31.75	9.65
Various	-27	20.62	2.92	Various -81	38.10	5.08
Various	-28	25.40	3.56	Various -82	13.00	4.09
Various	-32	38.10	12.70	-111	15.01	5.51



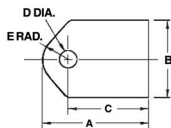
TO-36	Part Number Suffix	"A"	"B"	"C"
	-08	27.00	17.53	4.83



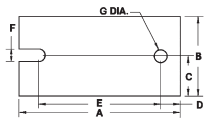
Small Power Devices	Part Number Suffix	"A"	"B"	"C"
TO-5, 3 Holes	-09	9.14	5.08	1.02
TO-18, 3 Holes	-12	6.35	2.54	0.91
TO-18, 4 Holes	-13	6.35	2.54	0.91
TO-5, 4 Holes	-33	9.14	5.08	1.02
TO-5, 3 Holes	-44	9.91	5.08	1.02
TO-5, 4 Holes	-45	9.91	5.08	1.02



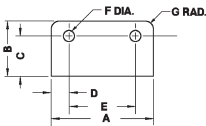
Rectifier	Part Number Suffix	"A"	"B"	"C"
	-46	31.75	31.75	5.08
	-47	28.58	28.58	3.56
	-48	25.40	25.40	4.75



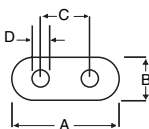
TIP Packages	Part Number Suffix	"A"	"B"	Dimensions "C" "D" "E"		
Clip Mount	-42	24.99	19.99			5.21
TIP-36 Plastic Tip	-53	21.97	16.51	16.51	3.56	5.21
TO-3P	-65	32.00	19.99	24.99	3.61	5.21
Plastic Clip	-73	24.99	19.99	17.98	3.61	5.21



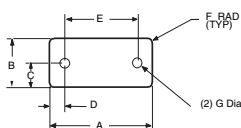
Power Module	Part Number Suffix	"A"	"B"	Dimensions "C" "D" "E"			"F"	"G"
	-100	63.75	32.00	16.00	7.75	48.26	5.21	5.21
	-123	41.00	27.99	14.00	3.99	30.99	3.00	3.00



SIP Package	Part Number Suffix	"A"	"B"	Dimensions "C" "D" "E" "F" "G"				
	-105	36.83	21.29	15.54	6.22	24.38	4.32	3.05



Power Module	Part Number Suffix	"A"	"B"	Dimensions "C" "D"	
	-115	11.99	5.00	4.90	0.79



Power Module	Part Number Suffix	"A"	"B"	Dimensions "C" "D" "E" "F" "G"				
	-109	34.29	16.31	8.15	4.95	24.38	1.52	3.18

ORDERING