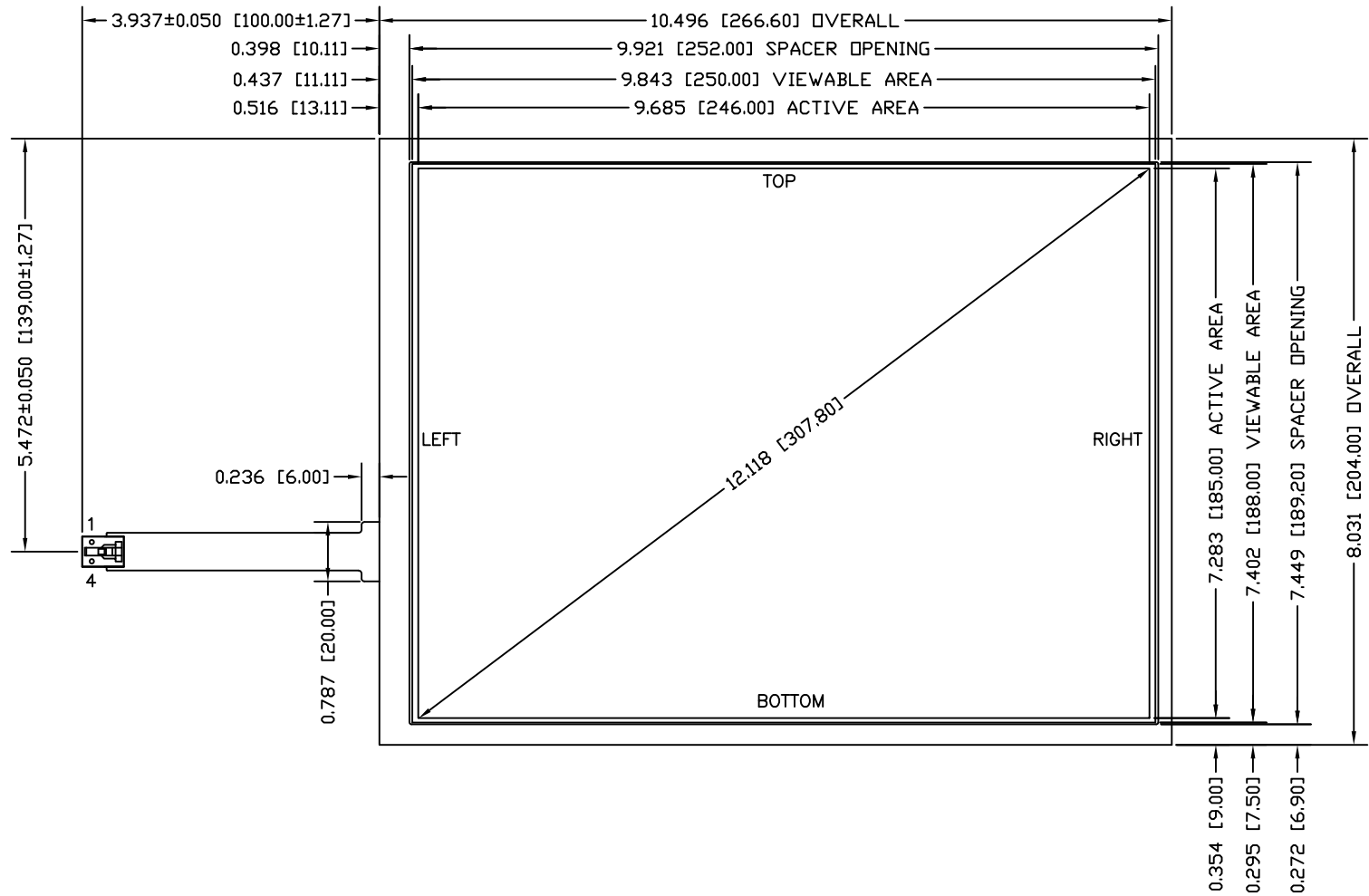
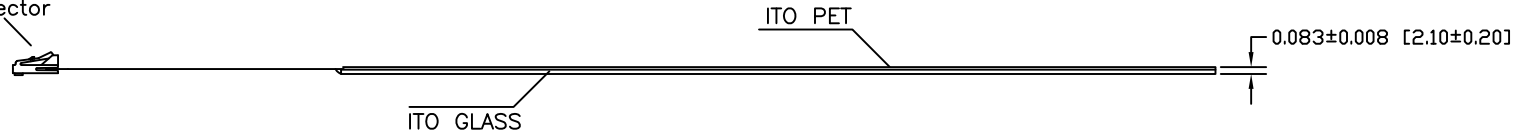


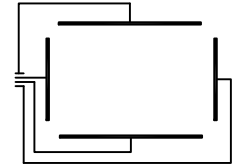
REV	INITIALS	DATE	DESCRIPTION



4 Pin 2.54mm Pitch  
Female Connector



- NOTES:
1. TOLERANCE ±0.020 UNLESS NOTED OTHERWISE.
  2. TOP CONDUCTIVE LAYER TO HAVE AN ANTI-GLARE HARDCOATED SURFACE.
  3. PIN ONE IS DESIGNATED BY THE NUMERICAL NUMBER 1 BY CONNECTOR END.
  4. PINOUT TO BE AS INDICATED.  
PIN 1 - TOP.  
PIN 2 - LEFT.  
PIN 3 - BOTTOM.  
PIN 4 - RIGHT.
  5. TAIL TYPE: IMMERSION GOLD PLATED FPC WITH AMP LATCH STYLE HOUSING.



PIN DIAGRAM

BERGQUIST TOUGH PRODUCTS			
301 WASHINGTON STREET CANNON FALLS, MN 55009			
TITLE:	12.1 DIAGONAL 4-WIRE ROHS COMPLIANT		
DRN: MLR	DATE: 5/30/08	TOL: ±0.020	DWG # 9542A
CHKD:	DATE:	PART #:	REV
APVD:	DATE:	400431	